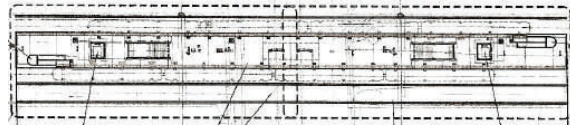
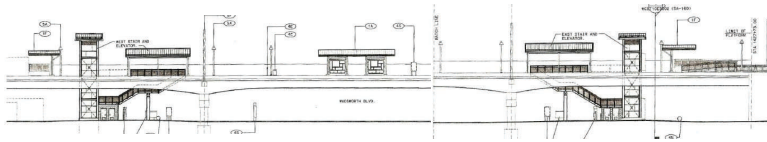
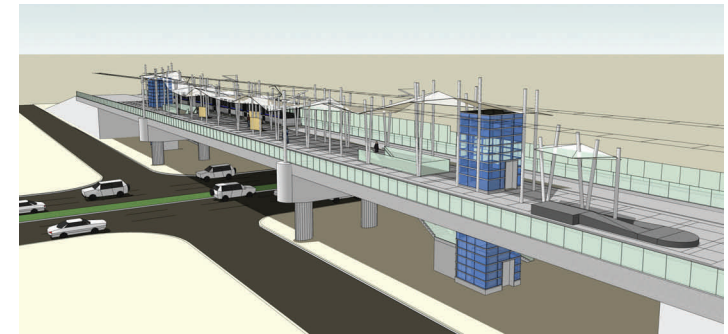


Wadsworth Station Betterment Comparison



RTD Standard Design

- 1) Design
Standard design with no changes from other stations along the West Corridor
- 2) Canopy Protection
A 1,300 square foot base-grade canopy design with minimal protection from sun and rain
- 3) Lighting
Approximately 80 linear feet of basic minimal lighting and in minimal locations
- 4) Elevators
Utilitarian basic security lighting in elevator shafts with minimal transparency
- 5) Site Furnishings
Standard site furnishings and pedestrian wind screens
- 6) Platform
A 10,000 square foot simple grey platform concrete floor finish
- 7) Guardrails
3,600 square feet of chain link perimeter guardrails
- 8) Stair Railings
Approximately 660 square feet of unilluminated steel mesh and chain link stair railings
- 9) Canopy Columns
Basic canopy supports



Wadsworth Station Betterment Design

- 1) Design
Artistic design that mimics Rocky Mountain weather formations coupled with the urban setting of Colfax
- 2) Canopy Protection
A 38 panel, 6,500 square foot, 330 foot long, translucent canopy to provide better pedestrian coverage from the elements and to provide greater visibility and identity for the station
- 3) Lighting
Indirect up-lighting illuminates the translucent material creating an outdoor ceiling. An additional 80 linear feet of direct and indirect lighting, 400 linear feet of direct and indirect light fixtures and over 60 additional fixtures provide even greater illumination and security under the canopy
- 4) Elevators
Elevator shafts are internally illuminated to produce a “lantern” effect at either end of the bridge and provide a more transparent glazing to allow for greater security
- 5) Site Furnishings
The three pedestrian wind screens and associated custom benches are upgraded to relate to the same translucent qualities of the canopy to provide greater weather protection, security, safety, and comfort
- 6) Platform
Simple gray concrete will be upgraded to multiple exposed aggregate finishes
- 7) Guardrails
Perimeter guardrails will be upgraded from chain link to glass and steel
- 8) Stair Railings
Stair railings will be upgraded from steel mesh and chain link to tempered glass and continuous LED lighting will illuminate the handrail and stairs for additional safety
- 9) Canopy Columns
Canopy supports for new canopy will increase to 65 new columns and made consistent with new canopy design